



Connections Engineering Outreach

Booking Forms:

Please read the following information carefully prior to completing the following forms:

During each of our visits, schools receive 250 minutes of instruction with both the Tech ‘n’ Tinker Trailer and our Connections Robotics. Our instructional time is broken down into three sessions – two 100-minute sessions, and one 50-minute session. The 50-minute session should be reserved for students in Kindergarten to grade 2 and should be scheduled at the end of the school day. The 100-minute sessions should be reserved for students in grades 3 to 8. If you are having trouble building your schedule, please visit www.queensconnections.ca/techntinker/ for an example schedule.

Connections staff facilitate the Tech ‘n’ Tinker programming and the Connections Robotics programming at the same time; start and end times should be the same for both programs. Please allow Connections staff at least 10 minutes between sessions in order to set up.

Tech ‘n’ Tinker programming will take place inside the Trailer, while the Connections Robotics programming will take place inside the school. It is recommended that schools host the robotics programming in a learning commons, or library. The Tech ‘n’ Tinker Trailer requires at least 30 feet of parking space.

Please complete and return the following forms in order to confirm your booking with the Tech ‘n’ Tinker Trailer and the Connections robotics programs. **All information must be provided in advance of our visit.**

Cancellation Policy:

Connections Engineering Outreach reserves the right to cancel a booking at any time. Bookings scheduled on snow days will automatically be cancelled and rescheduled.

Cancellations on behalf of the school should be made at least two weeks prior to our scheduled visit.

Payment Policy:

You will receive an invoice from the Finance Department at the Faculty of Engineering and Applied Science outlining payment details. Payments can be made by cheque or credit card.

Let's get ready to
Tinker!



Tech ‘n’ Tinker Trailer Schedule:

Parking for the Tech ‘n’ Tinker Trailer will be located: _____

Day 1

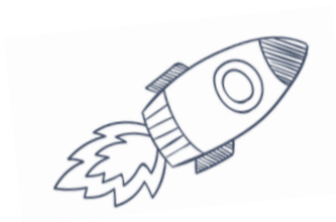
Workshop Start/End Time	Workshop Title	Grade	Teacher’s Name	Class Size	# of Female Participants

Is there anything that we should be made aware of prior to visiting with these classes (i.e. exceptionalities, accessibility requirements)?

Day 2 (If applicable)

Workshop Start/End Time	Workshop Title	Grade	Teacher’s Name	Class Size	# of Female Participants

Is there anything that we should be made aware of prior to visiting with these classes (i.e. exceptionalities, accessibility requirements)?



Connections Robotics Schedule:

Connections Robotics programs will be hosted in: _____

Day 1

Workshop Start/End Time	Workshop Title	Grade	Teacher's Name	Class Size	# of Female Participants

Is there anything that we should be made aware of prior to visiting with these classes (i.e. exceptionalities, accessibility requirements)?

Day 2 (if applicable)

Workshop Start/End Time	Workshop Title	Grade	Teacher's Name	Class Size	# of Female Participants

Is there anything that we should be made aware of prior to visiting with these classes (i.e. exceptionalities, accessibility requirements)?

